



Kuriyama Hydraulic Connections™



ALFAGOMMA®



ARGUS

Quick Release Couplings



Kuriyama of America, Inc.



EDITION 0619

Quick Release Couplings Index



QA-ISO-A 8-9

POPPET STANDARD ISO 7241 A

* Also available in stainless



QB-ISO-B 10-11

POPPET STANDARD ISO 7241 B



QP 12-13

AG POPPET INDUSTRY STANDARD



QT 14-15

AG BALL INDUSTRY STANDARD



QC 16-17

PUSH/PULL POPPET STANDARD ISO 7241 A

* Non-stock/Special order



QF 18-19

FLAT FACE STANDARD ISO 16028



QG 20-21

FLAT FACE STANDARD ISO 16028

Connect under pressure

* Non-stock/Special order



QS 22-23

SCREW TYPE FLAT FACE

* Non-stock/Special order



QK 24-25

SCREW TYPE FLAT FACE

Connect under pressure

* Non-stock/Special order



QX 26-27

SCREW TYPE POPPET STANDARD ISO 14540



QM 28-29

MULTI-COUPLING

* Non-stock/Special order

Flow Rate Tables 30-31

Because we continually examine ways to improve our products, we reserve the right to alter specifications or discontinue products without prior notice.



ARGUS is one of the ALFAGOMMA's Group brands.

Since 1936 ARGUS has been manufacturing high-quality hydraulic components. Ever since the name ARGUS has stood for quality, safety and technical competence. Many years of experience and constant effort to optimize our products enable us to quickly and flexibly respond to customers' needs.

The products are manufactured in our Italian plants.



Because we continually examine ways to improve our products, we reserve the right to alter specifications or discontinue products without prior notice.





**TAILOR
MADE**

**We develop every kind of quick release
and multi-coupling system according to
customer's needs or specifications**

Because we continually examine ways to improve our products, we reserve the right to alter specifications or discontinue products without prior notice.





QUICK RELEASE COUPLING

For fast and easy connections of hydraulic hoses, the ALFAGOMMA range of fluid components includes the ARGUS series of quick disconnect couplings, with products complying to international standards ISO 7241-1 A & B, ISO 5675 and ISO 16028, having poppet and flat face valve respectively.

The standardized design assures the complete interchangeability with corresponding couplings currently in use.

Made from high strength carbon steel as the basic material, hardened in parts subject to wear, ARGUS couplings feature a chrome-III zinc plating with a long lasting resistance to oxidation (TOP COAT, patented).

The mechanical and fluid dynamic performance are maximized by means of specific geometries defined through CFD calculations. Additional extensive testing is carried out after production following the requirements of ISO 7241-2 standard.

ISO-A range includes the true general purpose quick release couplings, with sizes from 1/4" to 1 1/2", BSPP, NPTF and metric threaded connections, and working pressure up to 350 bar. Agricultural machinery is the main application for ISO-A for ISO-A couplings.

ISO 7241-1 B series is more employed in the industrial sector (pressures can reach 400 bar), for equipment powered and controlled by hydraulic systems.

The **flat faced range** is the optimal choice to avoid circuit contamination and oil leakage when connecting and disconnecting.

Flat faced couplings are widely used on construction equipment, but also in hostile environments where spillage can constitute a danger. They have sizes from 1/4" to 1", constant working pressure of 350 bar and minimized flow losses.

Screw quick couplings are also included in the ARGUS family. Connection under residual pressure is made possible by specific couplings with poppet or flat face valve. Further sizes and types, including customized multi-coupling systems, are available on request.

Not all items are available from stock. Please consult factory.

POPPET VALVE	FLAT FACE VALVE	SCREW TYPE		MULTI-COUPLING
		POPPET	FLAT FACE	
QA-ISO-A	QF 350 bar *	QH	QR	QM
QA-ISO-A SS	QG MP *	QX	QS *	
QB-ISO-B			QK *	
QP				
QT				
QC				
QO				
QJ				
QE				
QN				

* Patent Pending

Because we continually examine ways to improve our products, we reserve the right to alter specifications or discontinue products without prior notice.



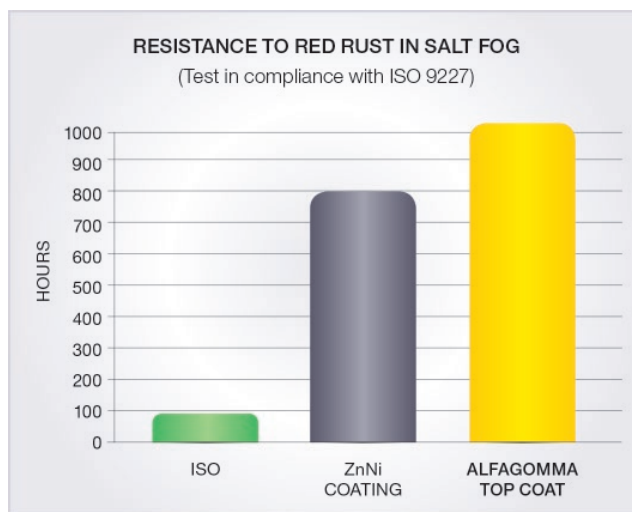
TOP COAT TREATMENT

Thanks to the exclusive ALFAGOMMA TOP COAT – Galvanic Coating – proprietary technology, the complete range of ARGUS Quick release couplings can boast an extraordinary wear and corrosion resistance, so as to guarantee a longer lifespan to your system.

ALFAGOMMA TOP COAT is based on a system of trivalent passivation which reaches outstanding rusting and corrosion resistance levels. Tested in accordance with ASTM B117-03 and UNI ISO 9227 standards, ALFAGOMMA TOP COAT ensures over 1000 hours to red rust.

All ALFAGOMMA metal parts feature TOP COAT an innovative proprietary surface treatment developed and patented by the ALFAGOMMA Research & Development team

- Corrosion resistance exceeding 500 hrs white and 1000 hrs red rust resistance – ASTM B117-03 and UNI ISO 9227 standards
- Exceptional interfacial adhesion and outstanding impact resistance, with almost no micro-cracking, chipping and delamination
- Trivalent passivation and high resistance sealing
- Chromium(VI)-free in conformity with the European directive 2000/53/EC



Because we continually examine ways to improve our products, we reserve the right to alter specifications or discontinue products without prior notice.



COUPLING IDENTIFICATION PROFILE

Quick Connect Couplings Part Number Configurator

Quick Coupling	Coupling Type	Coupling Gender	Coupling Size	Thread Size	Thread Configuration	Optional for Stainless Steel
Q						SS
All Quick Couplings start with Q	A= ISO A B= ISO B C= ISO A Push/Pull F= Flat Face G= Flat Face Male CUP* K= Flat Face Screw Type CUP* T= AG Ball P= AG Poppet X= 10K S= Flat Face Screw Type *Connect Under Pressure	F= Female M= Male C= Dust Cap P= Dust Plug	-04 or 1/4" -05 or 5/16" -06 or 3/8" -08 or 1/2" -10 or 5/8" -12 or 3/4" -14 or 7/8" -16 or 1" -20 or 1 1/4" -24 or 1 1/2" -32 or 2" *For Metric, Enter Exact Thread Size in mm.		Suffix Description FNPR Female National Pipe Rigid MNPT Male Pipe NPTF MJIC Male JIC FORB Female O-Ring Boss MORB Male O-Ring Boss MSAE Male SAE MOFS Male O-Ring Face Seal FBPP Female British Pipe Parallel FBPT Female British Pipe Tapered MBPP Male British Pipe Parallel MBPT Male British Pipe Tapered/JIS MMSH Male Metric Solid-Heavy MMSL Male Metric Solid-Light	

Notes:

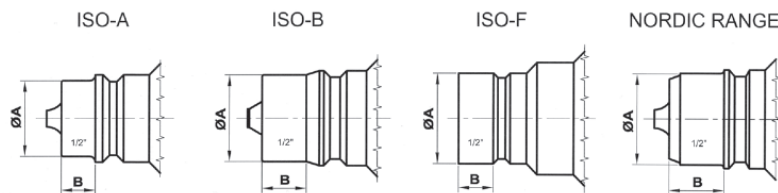
ISO A in accordance to ISO 7241-1 A

ISO B in accordance to ISO 7241-1 B

Flat Face (F) in accordance to ISO 16028

Flat Face Screw Type (K) in accordance to ISO 14540

10K (X) in accordance to ISO 14540 for use on power tools to 10,000 PSI



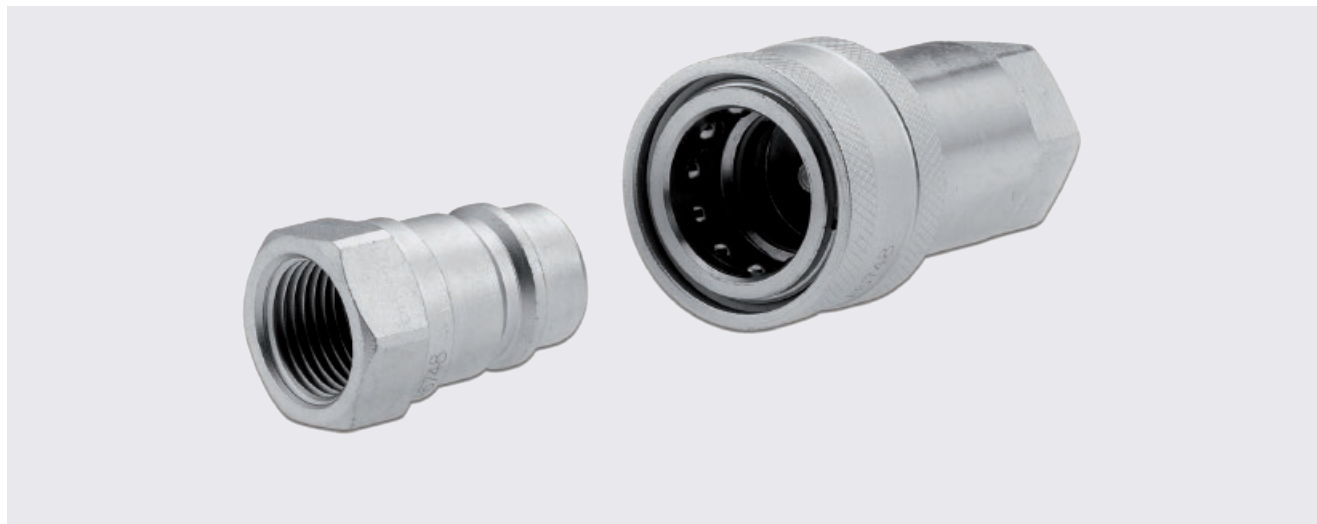
Size (in.)	Dimensions (mm)							
	ISO-A		ISO-B		ISO-F		Nordic Range	
	A	B	A	B	A	B	A	B
3/16	-	-	10.85	7.9	-	-	9.3	6.8
1/4	11.8	5.6	14.15	9.65	16.15	5.75	11.9	11.8
3/8	17.25	8.9	19.05	12.45	19.7	4.75	19.9	13.7
1/2	20.5	9.3	23.5	12.2	24.5	9.85	24.6	15
5/8	-	-	-	-	27	9.85	-	-
3/4	29.05	16	31.4	18.8	29.9	11.4	32.7	18.5
1	34.3	19.85	37.75	20.6	36	10.9	41	21.5
1-1/4	44.95	25	-	-	-	-	-	-
1-1/2	54.95	30.7	44.45	32.6	-	-	-	-
2	65.05	35.1	63.2	38.1	-	-	-	-

Because we continually examine ways to improve our products, we reserve the right to alter specifications or discontinue products without prior notice.



QA-ISO-A

POPPET STANDARD ISO 7241 A



DN 6 to 51
1/4" to 2"



to max WP 350 bar
5075 PSI

- Quick and simple coupling and uncoupling
- Cost effective
- Also available in stainless steel

General features: ARGUS ISO 7241-1 series “A” quick release couplings are used for quick coupling and uncoupling of hydraulic lines. During the coupling action in zero or low-pressure ranges, valves that release or block the flow are automatically activated. The QA-ISO-A quick release coupling, formed by the coupling plug and the coupling socket, is connected by pushing on a sleeve. This guarantees a flush connection between the two coupling halves.

Materials: galvanized steel with hardened parts subject to wear - NBR O-rings (other materials optional) - Thermoplastic dust cap and dust plug. Cr-III zinc plating through additional passivation for improved surface protection (TOP COAT for metric version).

Application: suitable for liquid lines with mineral oil-based hydraulic fluids to DIN 51524 T1+T2.

Norm:
ISO 7241 A

Temperature range:
-4°F (-20°C) to +212°F (+100°C)
Temp. range for metric version -22°F (-30°C) to 257°F (+125°C)

Note: rated flow / pressure drop compliant with ISO 7241-1 standard.

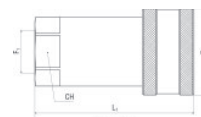
Specific instructions for installation, use and maintenance are separately provided.

Because we continually examine ways to improve our products, we reserve the right to alter specifications or discontinue products without prior notice.



STANDARD ISO 7241 A - POPPET QA-ISO-A

Female coupling - Female thread

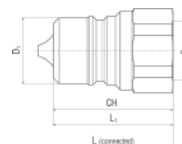


Item Code				Working Pressure	Burst Pressure	Thread 1	F1	D1	CH	L1	L
	Dash	mm	in	psi	psi			mm	mm	mm	mm
QAF-0404-FNPR	04	6.0	1/4	5075	20300	NPTF	1/4-18	26.0	19.0	50.0	74.20
QAF-0606-FNPR	06	10.0	3/8	4568	18270	NPTF	3/8-18	31.5	22.0	57.1	78.50
QAF-0808-FNPR	08	13.0	1/2	3915	15660	NPTF	1/2-14	38.5	27.0	66.0	88.20
QAF-1212-FNPR	12	19.0	3/4	3625	14500	NPTF	3/4-14	48.0	34.0	82.5	110.40
QAF-1616-FNPR	16	25.0	1	2900	11600	NPTF	1-11 1/2	56.0	41.0	100.0	132.90
QAF-2424-FNPR	24	38.0	1 1/2	2320	9280	NPTF	1 1/2-11 1/2	84.5	60.0	133.0	167.00
QAF-3232-FNPR	32	51.0	2	1450	5800	NPTF	2-11 1/2	99.0	75.0	165.0	210.00

Other threads available. Please consult factory.

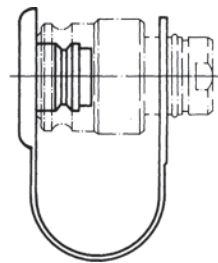
STANDARD ISO 7241 A - POPPET QA-ISO-A

Male coupling - Female thread



Item Code				Working Pressure	Burst Pressure	Thread 1	F1	D1	CH	L1	L
	Dash	mm	in	psi	psi			mm	mm	mm	mm
QAM-0404-FNPR	04	6.0	1/4	5075	20300	NPTF	1/4-18	11.8	19.0	38.5	74.20
QAM-0606-FNPR	06	10.0	3/8	4568	18270	NPTF	3/8-18	17.3	22.0	39.0	78.50
QAM-0808-FNPR	08	13.0	1/2	3915	15660	NPTF	1/2-14	20.5	27.0	44.0	88.20
QAM-1212-FNPR	12	19.0	3/4	3625	14500	NPTF	3/4-14	29.0	34.0	55.0	110.40
QAM-1616-FNPR	16	25.0	1	2900	11600	NPTF	1-11 1/2	34.3	41.0	66.0	132.90
QAM-2424-FNPR	24	38.0	1 1/2	2320	9280	NPTF	1 1/2-11 1/2	55.0	60.0	83.5	167.00
QAM-3232-FNPR	32	51.0	2	1450	5800	NPTF	2-11 1/2	65.0	75.0	105.0	210.00

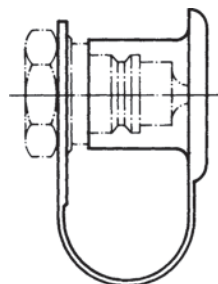
Other threads available. Please consult factory.



STANDARD ISO 7241 A - POPPET QA-ISO-A

Dust plug for female coupling

Item Code	Color	Material			
			Dash	mm	inch
QAP-04	RED	PE	04	6.0	1/4
QAP-06	RED	PE	06	10.0	3/8
QAP-08	RED	PE	08	13.0	1/2
QAP-12	RED	PE	12	19.0	3/4
QAP-16	RED	PE	16	25.0	1



STANDARD ISO 7241 A - POPPET QA-ISO-A

Dust cap for male coupling

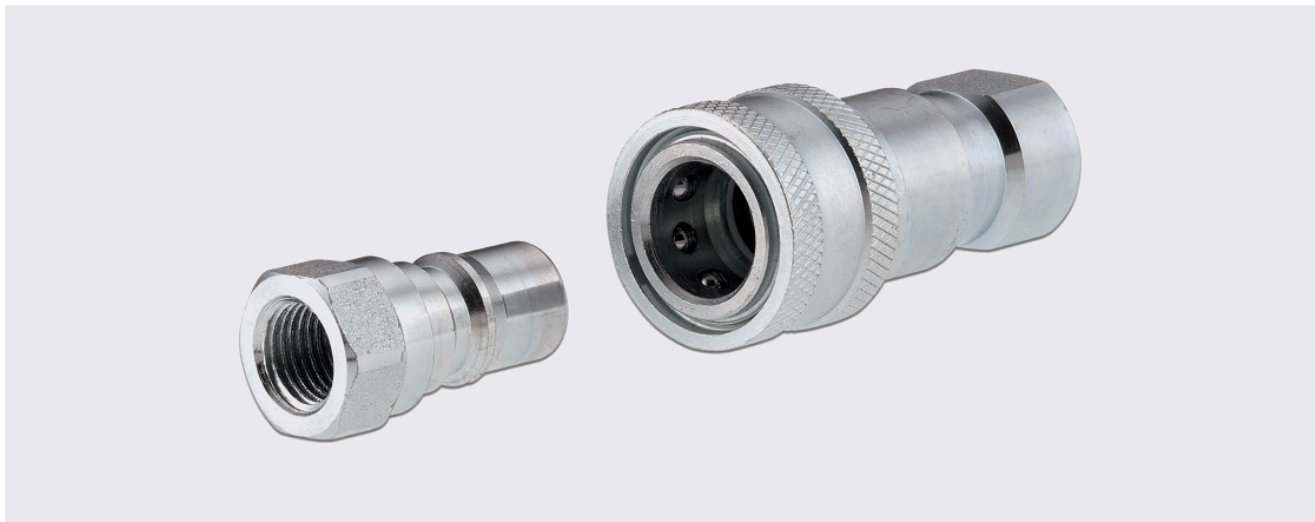
Item Code	Colour	Material			
			Dash	mm	inch
QAC-04	RED	PE	04	6.0	1/4
QAC-06	RED	PE	06	10.0	3/8
QAC-08	RED	PE	08	13.0	1/2
QAC-12	RED	PE	12	19.0	3/4
QAC-16	RED	PE	16	25.0	1

Because we continually examine ways to improve our products, we reserve the right to alter specifications or discontinue products without prior notice.



QB-ISO-B

POPPET STANDARD ISO 7241 B



DN 6 TO 25
1/4" to 1"



to max WP 300 bar
4350 PSI

- Quick and simple coupling and uncoupling

General features: ARGUS ISO 7241-1 series “B” quick release couplings are used for quick coupling and uncoupling of hydraulic lines. During the coupling action in zero or low-pressure ranges, valves that release or block the flow are automatically activated. The QB-ISO-B quick release coupling, formed by the coupling plug and the coupling socket, is connected by pushing on a sleeve. This guarantees a flush connection between the two coupling halves.

Materials: galvanized steel with hardened parts subject to wear - NBR O-rings (other materials optional) - Thermoplastic dust cap and dust plug. Cr-III zinc plating through additional passivation for improved surface protection. Also available in stainless steel.

Application: suitable for liquid lines with mineral oil-based hydraulic fluids to DIN 51524 T1+T2.

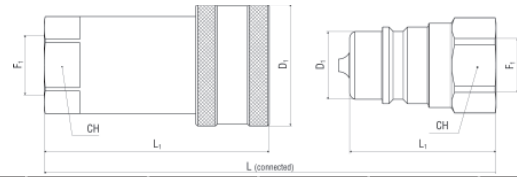
Norm: ISO 7241 B

Temperature range:
-4°F (-20°C) to +212°F (+100°C)

Note: rated flow / pressure drop compliant with ISO 7241-1 standard.

Specific instructions for installation, use and maintenance are separately provided.

Because we continually examine ways to improve our products, we reserve the right to alter specifications or discontinue products without prior notice.



STANDARD ISO 7241 B - POPPET QB-ISO-B

Female coupling - Female thread

Item Code				Working Pressure psi	Burst Pressure psi	Thread 1	F1	D1	CH	L1	L
	Dash	mm	in								
QBF-0404-FNPR	04	6.0	1/4	4350	17400	NPTF	1/4-18	28.5	19.0	58.0	72.00
QBF-0606-FNPR	06	10.0	3/8	4060	16240	NPTF	3/8-18	35.0	24.0	65.0	81.00
QBF-0808-FNPR	08	13.0	1/2	3625	14500	NPTF	1/2-14	44.5	28.5	74.0	93.50
QBF-1212-FNPR	12	19.0	3/4	2900	11600	NPTF	3/4-14	54.0	36.0	92.0	113.00
QBF-1616-FNPR	16	25.0	1	2175	8700	NPTF	1-11 1/2	63.5	41.0	103.0	127.00

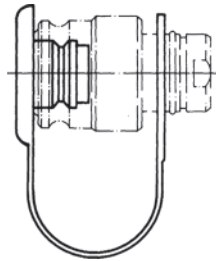
Other threads available. Please consult factory.

STANDARD ISO 7241 B - POPPET QB-ISO-B

Male coupling - Female thread

Item Code				Working Pressure psi	Burst Pressure psi	Thread 1	F1	D1	CH	L1	L
	Dash	mm	in								
QBM-0404-FNPR	04	6.0	1/4	4350	17400	NPTF	1/4-18	14.2	19.0	36.0	72.00
QBM-0606-FNPR	06	10.0	3/8	4060	16240	NPTF	3/8-18	19.1	24.0	40.0	81.00
QBM-0808-FNPR	08	13.0	1/2	3625	14500	NPTF	1/2-14	23.5	28.5	46.5	93.50
QBM-1212-FNPR	12	19.0	3/4	2900	11600	NPTF	3/4-14	31.4	36.0	56.0	113.00
QBM-1616-FNPR	16	25.0	1	2175	8700	NPTF	1-11 1/2	37.8	41.0	63.0	127.00

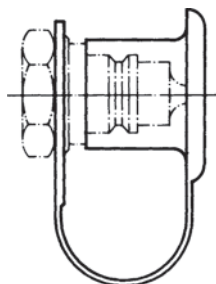
Other threads available. Please consult factory.



STANDARD ISO 7241 B - POPPET QB-ISO-B

Dust plug for female coupling

Item Code	Color	Material			
			Dash	mm	in
QBP-04	RED	PE	04	6.0	1/4
QBP-06	RED	PE	06	10.0	3/8
QBP-08	RED	PE	08	13.0	1/2
QBP-12	RED	PE	12	19.0	3/4
QBP-16	RED	PE	16	25.0	1



STANDARD ISO 7241 B - POPPET QB-ISO-B

Dust cap for male coupling

Item Code	Color	Material			
			Dash	mm	in
QBC-04	RED	PE	04	6.0	1/4
QBC-06	RED	PE	06	10.0	3/8
QBC-08	RED	PE	08	13.0	1/2
QBC-12	RED	PE	12	19.0	3/4
QBC-16	RED	PE	16	25.0	1

Because we continually examine ways to improve our products, we reserve the right to alter specifications or discontinue products without prior notice.



QP

POPPET INDUSTRY STANDARD ISO 5675



DN 6 to 25
1/4" to 1"



to max WP 350 bar
5075 PSI

- Agricultural/normal series
- Compatibility with other couplings in-use
- 1/2" size compatible with ISO 7241-1-A

General features: ARGUS Agricultural/Normal quick release couplings are used for quick coupling and uncoupling of hydraulic lines. During the coupling action in zero or low-pressure ranges, valves that release or block the flow are automatically activated. The QP quick release coupling, formed by the coupling plug and the coupling socket, is connected by pushing on a sleeve. This guarantees a flush connection between the two coupling halves.

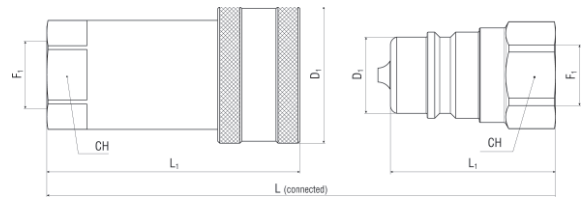
Materials: galvanized steel with hardened parts subject to wear - NBR O-rings (other materials optional) - Thermoplastic dust cap and dust plug. Cr-III zinc plating through additional passivation for improved surface protection.

Application: suitable for liquid lines with mineral oil-based hydraulic fluids to DIN 51524 T1+T2.

Temperature range:
-4°F (-20°C) to +212°F (+100°C)

Note: specific instructions for installation, use and maintenance are separately provided.

Because we continually examine ways to improve our products, we reserve the right to alter specifications or discontinue products without prior notice.



INDUSTRY STANDARD - POPPET QP

Female coupling - Female thread

Item Code				Working Pressure	Burst Pressure	Thread 1	F1	D1	CH	L1	L
	Dash	mm	in	psi	psi			mm	mm	mm	mm
QPF-0404-FNPR	04	6.0	1/4	5075	20300	NPTF	1/4-18	27.6	19.0	53.5	72.00
QPF-0606-FNPR	06	10.0	3/8	3915	15660	NPTF	3/8-18	34.0	24.0	63.0	83.00
QPF-1212-FNPR	12	19.0	3/4	2900	11600	NPTF	3/4-14	48.2	34.0	82.5	108.00
QPF-1616-FNPR	16	25.0	1	2900	11600	NPTF	1-11 1/2	56.5	41.0	96.5	127.00

Other threads available. Please consult factory. 1/2" size interchanges with ISO 7241 A. See page 9 for female part number.

INDUSTRY STANDARD - POPPET QP

Male coupling - Female thread

Item Code				Working Pressure	Burst Pressure	Thread 1	F1	D1	CH	L1	L
	Dash	mm	in	psi	psi			mm	mm	mm	mm
QPM-0404-FNPR	04	6.0	1/4	5075	20300	NPTF	1/4-18	14.1	19.0	36.0	72.00
QPM-0606-FNPR	06	10.0	3/8	3915	15660	NPTF	3/8-18	18.9	24.0	40.0	83.00
QPM-1212-FNPR	12	19.0	3/4	2900	11600	NPTF	3/4-14	27.9	34.0	49.0	108.00
QPM-1616-FNPR	16	25.0	1	2900	11600	NPTF	1-11 1/2	31.3	41.0	64.0	127.00

Other threads available. Please consult factory. 1/2" size interchanges with ISO 7241 A. See page 9 for female part number.

Because we continually examine ways to improve our products, we reserve the right to alter specifications or discontinue products without prior notice.



QT

BALL INDUSTRY STANDARD ISO 5675



DN 6 to 25
1/4" to 1"



to max WP 350 bar
5075 PSI

- Ball valve
- Agricultural/normal series
- Compatibility with other couplings in-use
- 1/2" size compatible with ISO 7241-1-A

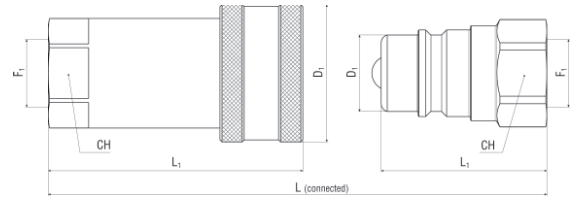
General features: ARGUS Agricultural/Normal quick release couplings with ball valve are used for quick coupling and uncoupling of hydraulic lines. During the coupling action in zero or low-pressure ranges, valves that release or block the flow are automatically activated. The QT quick release coupling, formed by the coupling plug and the coupling socket, is connected by pushing on a sleeve.

Materials: galvanized steel with hardened parts subject to wear - NBR O-rings (other materials optional) - Thermoplastic dust cap and dust plug. Cr-III zinc plating through additional passivation for improved surface protection.

Application: suitable for liquid lines with mineral oil-based hydraulic fluids to DIN 51524 T1+T2.

Temperature range:
-4°F (-20°C) to +212°F (+100°C)

Note: specific instructions for installation, use and maintenance are separately provided.



INDUSTRY STANDARD - Ball QT

Female coupling - Female thread

Item Code				Working Pressure	Burst Pressure	Thread 1	F1	D1	CH	L1	L
	Dash	mm	in								
QTF-0404-FNPR	04	6.0	1/4	5075	20300	NPTF	1/4-18	27.6	19.0	53.5	72.00
QTF-0606-FNPR	06	10.0	3/8	3915	15660	NPTF	3/8-18	34.0	24.0	63.0	83.00
QTF-0808-FNPR	08	13.0	1/2	3915	15660	NPTF	1/2-14	38.5	27.0	66.0	88.20
QTF-1212-FNPR	12	19.0	3/4	2900	11600	NPTF	3/4-14	48.2	34.0	82.5	108.00
QTF-1616-FNPR	16	25.0	1	2900	11600	NPTF	1-11 1/2	56.5	41.0	96.5	127.00

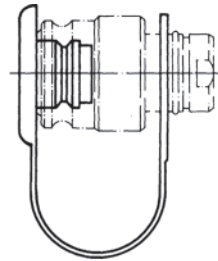
Other threads available. Please consult factory.

INDUSTRY STANDARD - Ball QT

Male coupling - Female thread

Item Code				Working Pressure	Burst Pressure	Thread 1	F1	D1	CH	L1	L
	Dash	mm	in								
QTM-0404-FNPR	04	6.0	1/4	5075	20300	NPTF	1/4-18	14.1	19.0	36.0	72.00
QTM-0606-FNPR	06	10.0	3/8	3915	15660	NPTF	3/8-18	18.9	24.0	40.0	83.00
QTM-0808-FNPR	08	13.0	1/2	3915	15660	NPTF	1/2-14	20.5	27.0	44.0	88.20
QTM-1212-FNPR	12	19.0	3/4	2900	11600	NPTF	3/4-14	27.9	34.0	49.0	108.00
QTM-1616-FNPR	16	25.0	1	2900	11600	NPTF	1-11 1/2	31.3	41.0	64.0	127.00

Other threads available. Please consult factory.

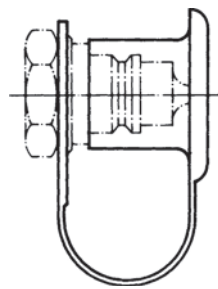


INDUSTRY STANDARD - POPPET QT

Dust plug for female coupling

Item Code	Color	Material			
			Dash	mm	in
QTP-04	RED	PE	04	6.0	1/4
QTP-06	RED	PE	06	10.0	3/8
QTP-12	RED	PE	12	19.0	3/4
QTP-16	RED	PE	16	25.0	1

1/2" size interchanges with ISO 7241 A. See page 9 for female part number.



INDUSTRY STANDARD - POPPET QT

Dust cap for male coupling

Item Code	Color	Material			
			Dash	mm	in
QTC-04	RED	PE	04	6.0	1/4
QTC-06	RED	PE	06	10.0	3/8
QTC-12	RED	PE	12	19.0	3/4
QTC-16	RED	PE	16	25.0	1

1/2" size interchanges with ISO 7241 A. See page 9 for female part number.

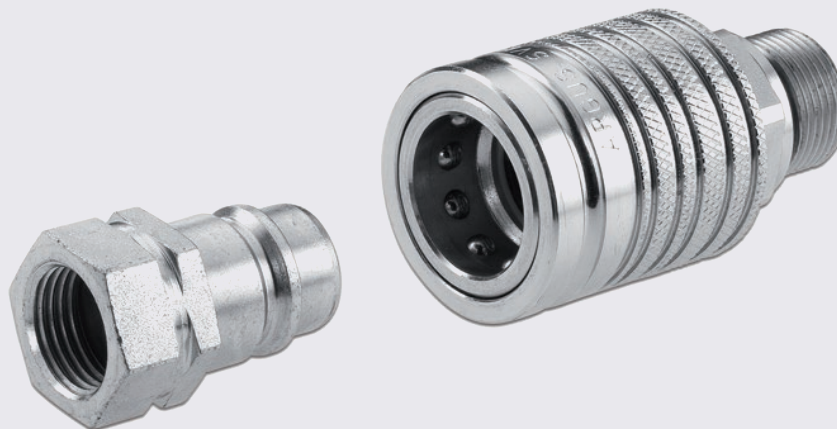
Because we continually examine ways to improve our products, we reserve the right to alter specifications or discontinue products without prior notice.



QC-ISO-A

POPPET STANDARD ISO 7241 A

TOP COAT



DN 6 to 25
1/4" to 1"



to max WP 400 bar
5800 PSI

- Quick and simple coupling and uncoupling
- One-hand push pull operation
- Break-away function
- Low pressure drop

General features: ARGUS QC-ISO-A quick release couplings are used for quick coupling and uncoupling of loaded lines. During the coupling action in zero or low-pressure ranges, valves that release or block the flow are automatically activated. The QC-ISO-A quick release coupling, formed by the coupling plug and the coupling socket, is coupled by pushing on a sleeve. This guarantees a flush connection between the two coupling halves. The sleeve is designed so that it has only to be moved in the relevant direction for disconnecting or connecting of coupling halves. QC-ISO-A quick release couplings can be used as pull-off couplings by panel mounting the sleeve bush.

Materials: galvanized steel with hardened parts subject to wear - HNBR O-rings (other materials optional) - Galvanized steel threaded adapters for various connection types - Thermoplastic dust cap and dust plug (see QA-ISO-A). Top Coat Cr-III zinc plating with additional trivalent passivation for outstanding surface protection.

Application: suitable for liquid lines with mineral oil-based hydraulic fluids to DIN 51524 T1+T2. Also available for flame-resistant hydraulic fluids to VDMA 24317, for pneumatic and water hydraulics in appropriate materials on request.

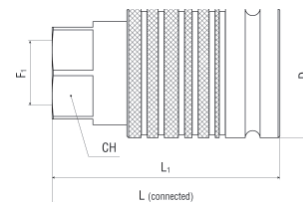
Norm:
ISO 7241 A
SAE J 1036

Temperature range:
-22°F (-30°C) to +257°F (+125°C)

Note: other sizes and connection types available on request.

Specific instructions for installation, use and maintenance are separately provided.

Because we continually examine ways to improve our products, we reserve the right to alter specifications or discontinue products without prior notice.



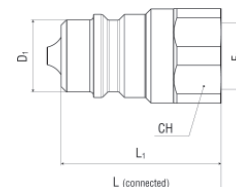
STANDARD ISO 7241 A PUSH PULL - POPPET QO-ISO-A

Female coupling - Female thread

Item Code				Working Pressure psi	Burst Pressure psi	Thread 1	F1	D1	CH	L1	L
	Dash	mm	inch					mm	mm	mm	mm
QCF-0404-FNPR	04	6.0	1/4	5800	23200	NPTF	1/4-18	25.0	19.0	46.5	64.10
QCF-0606-FNPR	06	10.0	3/8	5800	23200	NPTF	3/8-18	32.0	22.0	55.5	75.20
QCF-0808-FNPR	08	13.0	1/2	3625	14500	NPTF	1/2-14	38.0	27.0	63.5	86.70
QCF-1212-FNPR	12	19.0	3/4	3625	14500	NPTF	3/4-14	45.0	35.0	80.0	105.90
QCF-1616-FNPR	16	25.0	1	3625	14500	NPTF	1-11 1/2	52.0	40.0	94.5	121.40
QCF-0404-FORB	04	6.0	1/4	5800	23200	SAE-OB	7/16-20	25.0	19.0	46.5	64.10
QCF-0606-FORB	06	10.0	3/8	5800	23200	SAE-OB	9/16-18	32.0	24.0	57.5	79.20
QCF-0808-FORB	08	13.0	1/2	3625	14500	SAE-OB	3/4-16	38.0	27.0	63.5	86.70
QCF-1212-FORB	12	19.0	3/4	3625	14500	SAE-OB	1 1/16-12	45.0	35.0	82.5	110.90
QCF-1616-FORB	16	25.0	1	3625	14500	SAE-OB	1 5/16-12	52.0	40.0	94.5	121.40

NPTF connection according to ANSI B1-20.3, SAE UNF/UN connection according to SAE J 1926-1.

Other threads available. Please consult factory.



STANDARD ISO 7241 A PUSH PULL - POPPET QO-ISO-A

Male coupling - Female thread

Item Code				Working Pressure psi	Burst Pressure psi	Thread 1	F1	D1	CH	L1	L
	Dash	mm	in					mm	mm	mm	mm
QCM-0404-FORB	04	6.0	1/4	5800	23200	SAE-OB	7/16-20	11.8	19.0	32.0	64.10
QCM-0606-FORB	06	10.0	3/8	5800	23200	SAE-OB	9/16-18	17.3	24.0	39.5	79.20
QCM-0808-FORB	08	13.0	1/2	3625	14500	SAE-OB	3/4-16	20.5	27.0	49.5	86.70
QCM-1212-FORB	12	19.0	3/4	3625	14500	SAE-OB	1 1/16-12	29.1	35.0	55.5	110.90
QCM-1616-FORB	16	25.0	1	3625	14500	SAE-OB	1 5/16-12	34.3	40.0	60.5	121.30

For male coupling with female NPT threads, please refer to page 9 for part numbers.

NPTF connection according to ANSI B1-20.3, SAE UNF/UN connection according to SAE J 1926-1.

Other threads available. Please consult factory.



QF

FLAT FACE STANDARD ISO 16028

TOP COAT



PATENT PENDING



DN 6 to 25
1/4" to 1"



WP 350 bar
5075 PSI

- Flow performance optimized by CFD
- Low leak-oil rates, eco-friendly
- Robust, compact and lightweight
- Extended temperature range

General features: ARGUS QF flat face quick release couplings are used for quick coupling and uncoupling of hydraulic lines. During the coupling action in zero or low-pressure ranges, valves that release or block the flow are automatically activated. The QF flat face quick release coupling, formed by a coupling plug and a coupling socket, is coupled by pushing on a sleeve. This guarantees a flush connection between the two coupling halves. The sleeve is designed to be moved in the relevant direction for disconnecting or connecting the coupling halves. A safety system against accidental uncoupling is present on the female part.

Materials: galvanized steel with hardened parts subject to wear. HNBR seals (other materials on request) - Backup rings PTFE - Thermoplastic dust cap and dust plug. Top Coat Cr-III zinc plating with additional trivalent passivation for outstanding surface protection.

Application: suitable for liquid lines with mineral oil-based hydraulic fluids to DIN 51524 T1+T2. Also available for flame-resistant hydraulic fluids to VDMA 24317, for pneumatic and water hydraulics in appropriate materials on request.

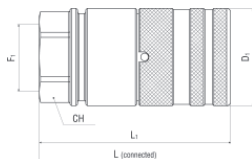
Norm: ISO 16028

Temperature range:
-22°F (-30°C) to +257°F (+125°C)

Note: other sizes and connection types available on request.

Specific instructions for installation, use and maintenance are separately provided.

Because we continually examine ways to improve our products, we reserve the right to alter specifications or discontinue products without prior notice.



STANDARD ISO 16028 - FLAT FACE QF

Female coupling - Female thread

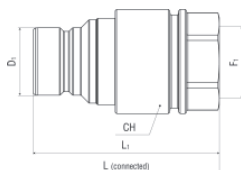
Item Code				Working Pressure	Burst Pressure	Thread 1	F1	D1	CH	L1	L
	Dash	mm	in								
QFF-0404-FNPR	04	6.0	1/4	5075	20300	NPTF	1/4-18	26.0	22.0	57.8	97.00
QFF-0606-FNPR	06	10.0	3/8	5075	20300	NPTF	3/8-18	32.0	27.0	69.3	117.00
QFF-0608-FNPR	06	10.0	3/8	5075	20300	NPTF	1/2-14	32.0	27.0	69.3	117.00
QFF-0808-FNPR	08	13.0	1/2	5075	20300	NPTF	1/2-14	38.0	32.0	74.5	125.00
QFF-0812-FNPR	08	13.0	1/2	5075	20300	NPTF	3/4-14	38.0	32.0	74.5	125.00
QFF-1012-FNPR	10	16.0	5/8	5075	20300	NPTF	3/4-14	40.0	34.0	81.3	134.00
QFF-1212-FNPR	12	19.0	3/4	5075	20300	NPTF	3/4-14	48.0	42.0	93.0	156.00
QFF-1216-FNPR	12	19.0	3/4	5075	20300	NPTF	1-11 1/2	48.0	42.0	93.0	156.00
QFF-1616-FNPR	16	25.0	1	5075	20300	NPTF	1-11 1/2	55.0	50.0	101.0	177.00
QFF-1620-FNPR	16	25.0	1	5075	20300	NPTF	1 1/4-11 1/2	55.0	50.0	101.0	177.00
QFF-0404-FORB	04	6.0	1/4	5075	20300	SAE-OB	7/16-20	26.0	22.0	57.8	97.00
QFF-0406-FORB	04	6.0	1/4	5075	20300	SAE-OB	9/16-18	26.0	22.0	57.8	97.00
QFF-0606-FORB	06	10.0	3/8	5075	20300	SAE-OB	9/16-18	32.0	27.0	71.3	119.00
QFF-0608-FORB	06	10.0	3/8	5075	20300	SAE-OB	3/4-16	32.0	27.0	72.3	121.00
QFF-0808-FORB	08	13.0	1/2	5075	20300	SAE-OB	3/4-16	38.0	32.0	74.5	125.00
QFF-0810-FORB	08	13.0	1/2	5075	20300	SAE-OB	7/8-14	38.0	32.0	74.5	125.00
QFF-0812-FORB	08	13.0	1/2	5075	20300	SAE-OB	1 1/16-12	38.0	32.0	80.5	137.00
QFF-1012-FORB	10	16.0	5/8	5075	20300	SAE-OB	1 1/16-12	40.0	34.0	90.3	153.00
QFF-1212-FORB	12	19.0	3/4	5075	20300	SAE-OB	1 1/16-12	48.0	42.0	95.5	160.50
QFF-1216-FORB	12	19.0	3/4	5075	20300	SAE-OB	1 5/16-12	48.0	42.0	97.5	164.50
QFF-1616-FORB	16	25.0	1	5075	20300	SAE-OB	1 5/16-12	55.0	50.0	107.3	185.30
QFF-1620-FORB	16	25.0	1	5075	20300	SAE-OB	1 5/8-12	55.0	50.0	109.3	187.30

NPTF connection according to ANSI B1-20.3, SAE UNF/UN connection according to SAE J 1926-1.

Other threads available. Please consult factory.

STANDARD ISO 16028 - FLAT FACE QF

Male coupling - Female thread



Item Code				Working Pressure	Burst Pressure	Thread 1	F1	D1	CH	L1	L
	Dash	mm	inch								
QFM-0404-FNPR	04	6.0	1/4	5075	20300	NPTF	1/4-18	16.2	20.0	50.5	97.00
QFM-0606-FNPR	06	10.0	3/8	5075	20300	NPTF	3/8-18	19.7	27.0	64.0	117.00
QFM-0608-FNPR	06	10.0	3/8	5075	20300	NPTF	1/2-14	19.7	27.0	64.0	117.00
QFM-0808-FNPR	08	13.0	1/2	5075	20300	NPTF	1/2-14	24.6	32.0	68.0	125.00
QFM-0812-FNPR	08	13.0	1/2	5075	20300	NPTF	3/4-14	24.6	32.0	68.0	125.00
QFM-1012-FNPR	10	16.0	5/8	5075	20300	NPTF	3/4-14	27.0	34.0	70.0	134.00
QFM-1212-FNPR	12	19.0	3/4	5075	20300	NPTF	3/4-14	29.9	42.0	85.0	156.00
QFM-1216-FNPR	12	19.0	3/4	5075	20300	NPTF	1-11 1/2	29.9	42.0	85.0	156.00
QFM-1616-FNPR	16	25.0	1	5075	20300	NPTF	1-11 1/2	36.0	50.0	99.0	177.00
QFM-1620-FNPR	16	25.0	1	5075	20300	NPTF	1 1/4-11 1/2	36.0	50.0	99.0	177.00
QFM-0404-FORB	04	6.0	1/4	5075	20300	SAE-OB	7/16-20	16.2	20.0	50.5	97.00
QFM-0406-FORB	04	6.0	1/4	5075	20300	SAE-OB	9/16-18	16.2	20.0	50.5	97.00
QFM-0606-FORB	06	10.0	3/8	5075	20300	SAE-OB	9/16-18	19.7	27.0	64.0	119.00
QFM-0608-FORB	06	10.0	3/8	5075	20300	SAE-OB	3/4-16	19.7	27.0	65.0	121.00
QFM-0808-FORB	08	13.0	1/2	5075	20300	SAE-OB	3/4-16	24.6	32.0	72.0	125.00
QFM-0810-FORB	08	13.0	1/2	5075	20300	SAE-OB	7/8-14	24.6	32.0	72.0	125.00
QFM-0812-FORB	08	13.0	1/2	5075	20300	SAE-OB	1 1/16-12	24.6	32.0	78.0	137.00
QFM-1012-FORB	10	16.0	5/8	5075	20300	SAE-OB	1 1/16-12	27.0	34.0	80.0	153.00
QFM-1212-FORB	12	19.0	3/4	5075	20300	SAE-OB	1 1/16-12	29.9	42.0	87.0	160.50
QFM-1216-FORB	12	19.0	3/4	5075	20300	SAE-OB	1 5/16-12	29.9	42.0	89.0	164.50
QFM-1616-FORB	16	25.0	1	5075	20300	SAE-OB	1 5/16-12	36.0	50.0	99.0	185.30
QFM-1620-FORB	16	25.0	1	5075	20300	SAE-OB	1 5/8-12	55.0	50.0	109.3	187.30

NPTF connection according to ANSI B1-20.3, SAE UNF/UN connection according to SAE J 1926-1.

Other threads available. Please consult factory.

Because we continually examine ways to improve our products, we reserve the right to alter specifications or discontinue products without prior notice.



QG

FLAT FACE STANDARD ISO 16028

TOP COAT



PATENT PENDING



DN 10 to 19
3/8" to 3/4"



WP 350 bar
5075 PSI

- Connectable under pressure with patented system
- Low effort to connect under pressure
- Robust, compact and light weight
- Low leak-oil rates, eco-friendly
- Low pressure drop

General features: connectable under pressure ARGUS QG flat face quick release couplings are used for quick coupling and uncoupling of hydraulic lines. During the coupling action in zero or low-pressure ranges, valves that release or block the flow are automatically activated. The QG flat face quick release coupling, formed by a coupling plug and a coupling socket, is coupled by pushing on a sleeve. This guarantees a flush connection between the two coupling halves. The sleeve is designed to be moved in the relevant direction for disconnecting or connecting the coupling halves.

Materials: galvanized steel with hardened parts subject to wear. HNBR seals (other materials on request) - backup rings PTFE - Thermoplastic dust cap and dust plug. Top Coat Cr-III zinc plating with additional trivalent passivation for outstanding surface protection.

Application: suitable for liquid lines with mineral oil-based hydraulic fluids to DIN 51524 T1+T2. Also available for flame-resistant hydraulic fluids to VDMA 24317, for pneumatic and water hydraulics in appropriate materials on request.

Norm: ISO 16028

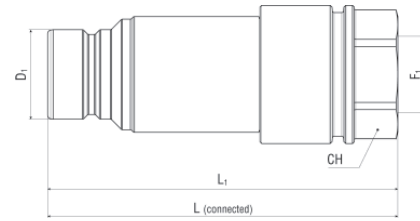
Temperature range:
-22°F (-30°C) to +257°F (+125°C)

Note: rated flow / pressure drop values on request.

Other sizes and connection types available on request.

Specific instructions for installation, use and maintenance are separately provided.

Because we continually examine ways to improve our products, we reserve the right to alter specifications or discontinue products without prior notice.



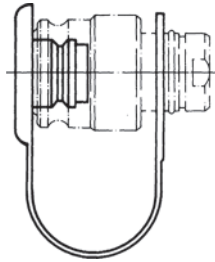
STANDARD ISO 16028 - FLAT FACE QG CONNECTABLE UNDER PRESSURE

Male coupling - Female thread

Item Code				Working Pressure psi	Burst Pressure psi	Thread 1	F1	D1 mm	CH mm	L1 mm	L mm
	Dash	mm	in								
QG-0606-FNPR	06	10.0	3/8	5075	20300	NPTF	3/8-18	19.7	27.0	82.5	134.00
QG-0808-FNPR	08	13.0	1/2	5075	20300	NPTF	1/2-14	24.6	32.0	94.5	152.00
QG-1212-FNPR	12	19.0	3/4	5075	20300	NPTF	3/4-14	29.9	42.0	118.5	189.50

NPTF connection according to ANSI B1-20.3.

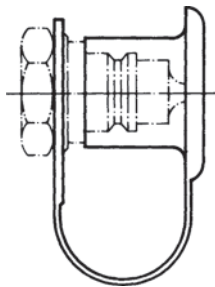
Other threads available. Please consult factory.



STANDARD ISO 16028 - FLAT FACE QF

Dust cap for female coupling

Item Code	Color	Material			
			Dash	mm	in
QFP-04	RED	PE	04	6.0	1/4
QFP-06	RED	PE	06	10.0	3/8
QFP-08	RED	PE	08	13.0	1/2
QFP-10	RED	PE	10	16.0	5/8
QFP-12	RED	PE	12	19.0	3/4
QFP-16	RED	PE	16	25.0	1



STANDARD ISO 16028 - FLAT FACE QF

Dust cap for male coupling

Item Code	Color	Material			
			Dash	mm	in
QFC-04	RED	PE	04	6.0	1/4
QFC-06	RED	PE	06	10.0	3/8
QFC-08	RED	PE	08	13.0	1/2
QFC-10	RED	PE	10	16.0	5/8
QFC-12	RED	PE	12	19.0	3/4
QFC-16	RED	PE	16	25.0	1

Because we continually examine ways to improve our products, we reserve the right to alter specifications or discontinue products without prior notice.

QS

SCREW TYPE FLAT FACE

TOP COAT



PATENT PENDING



DN 10 to 25
3/8" to 1"



to max WP 450 bar
6525 PSI

- Very low leak-oil rates, eco-friendly
- Highly robust construction
- Low pressure drop
- Locking system for safety purposes

General features: ARGUS QS quick release couplings enable oil leak-free connection and disconnection of hydraulic lines. Their robust construction and tested components make them ideally suited for high and intermittent pressure loads. During the coupling action, valves that release and/or block the flow are automatically activated. The QS quick release coupling, formed by coupling plug and coupling socket, is coupled by a screwing action with the hand nut of the plug component.

Materials: galvanized steel - Brass valve stem guide - HNBR O-rings (other materials optional). Top Coat Cr-III zinc plating with additional trivalent passivation for outstanding surface protection.

Application: suitable for liquid lines with mineral oil-based hydraulic fluids to DIN 51524 and DIN 51525. Also available for flame-resistant hydraulic fluids to VDMA 24317, for pneumatics and water hydraulics in appropriate materials on request.

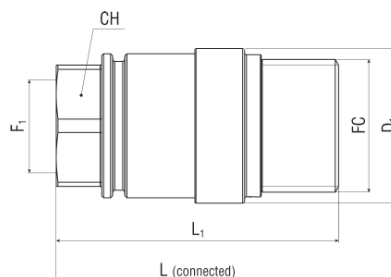
Temperature range:

-22°F (-30°C) to +257°F (+125°C)

Note: other sizes and connection types available on request.

Specific instructions for installation, use and maintenance are separately provided.

Because we continually examine ways to improve our products, we reserve the right to alter specifications or discontinue products without prior notice.



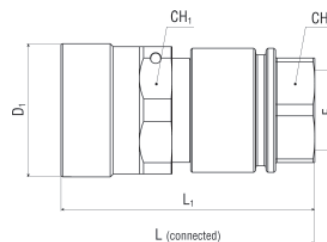
SCREW COUPLING - FLAT FACE QS

Female coupling - Female thread

Item Code				Working Pressure Conn.	Working Pressure Disconn.	Thread 1	F1	FC	D1	CH	L1	L
	Dash	mm	in									
QSF-0606-FNPR	06	10.0	3/8	6525	5075	NPTF	3/8-18	M28x2	34.8	27.0	69.3	117.40
QSF-0808-FNPR	08	13.0	1/2	6525	5075	NPTF	1/2-14	M35x3	40.8	32.0	74.5	127.40
QSF-1012-FNPR	10	16.0	5/8	6525	5075	NPTF	3/4-14	M38x3	43.8	34.0	81.3	133.50
QSF-1212-FNPR	12	19.0	3/4	6525	5075	NPTF	3/4-14	M43x3	51.0	42.0	93.0	156.00
QSF-1616-FNPR	16	25.0	1	5800	5075	NPTF	1-11 1/2	M52x4	59.8	50.0	101.0	176.90
QSF-1620-FNPR	16	25.0	1	5800	5075	NPTF	1 1/4-11 1/2	M52x4	59.8	50.0	101.0	176.90

NPTF connection according to ANSI B1-20.3.

Other threads available. Please consult factory.



SCREW COUPLING - FLAT FACE QS

Male coupling - Female thread

Item Code				Working Pressure Conn.	Working Pressure Disconn.	Thread 1	F1	D1	CH	CH1	L1	L
	Dash	mm	in									
QSM-0606-FNPR	06	10.0	3/8	6525	5075	NPTF	3/8-18	33.8	33.0	27.0	70.6	117.40
QSM-0808-FNPR	08	13.0	1/2	6525	5075	NPTF	1/2-14	40.8	39.0	32.0	77.7	127.40
QSM-1012-FNPR	10	16.0	5/8	6525	5075	NPTF	3/4-14	43.8	34.0	42.0	78.5	133.50
QSM-1212-FNPR	12	19.0	3/4	6525	5075	NPTF	3/4-14	51.2	50.0	42.0	94.3	156.00
QSM-1616-FNPR	16	25.0	1	5800	5075	NPTF	1-11 1/2	59.8	60.0	50.0	108.7	176.90
QSM-1620-FNPR	16	25.0	1	5800	5075	NPTF	1 1/4-11 1/2	59.8	60.0	50.0	108.7	176.90

NPTF connection according to ANSI B1-20.3.

Other threads available. Please consult factory.



QK

SCREW TYPE FLAT FACE

TOP COAT



PATENT PENDING



DN 10 to 25
3/8" to 1"



to max WP 450 bar
6525 PSI

- Connectable under pressure with patented system
- Very low leak-oil rates, eco-friendly
- Highly robust construction
- Low pressure drop
- Locking system for safety purposes

General features: connectable under pressure ARGUS QK quick release couplings enable oil leak-free connection and disconnection of hydraulic lines. Their robust construction and tested components make them ideally suited for high and intermittent pressure loads. During the coupling action, valves that release and/or block the flow are automatically activated. The QK quick release coupling, formed by coupling plug and coupling socket, is coupled by a screwing action with the hand nut of the plug component.

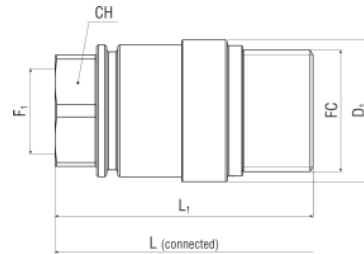
Materials: galvanized steel - Brass valve stem guide - HNBR O-rings (other materials optional). Top Coat Cr-III zinc plating with additional trivalent passivation for outstanding surface protection.

Application: suitable for liquid lines with mineral oil-based hydraulic fluids to DIN 51524 and DIN 51525. Also available for flame-resistant hydraulic fluids to VDMA 24317, for pneumatics and water hydraulics in appropriate materials on request.

Temperature range:
-22°F (-30°C) to +257°F (+125°C)

Note: other sizes and connection types available on request.

Specific instructions for installation, use and maintenance are separately provided.



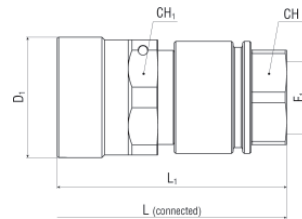
SCREW COUPLING - FLAT FACE QK CONNECTABLE UNDER PRESSURE

Female coupling - Female thread

Item Code				Working Pressure Conn.	Working Pressure Disconn.	Thread 1	F1	FC	D1	CH	L1
	Dash	mm	in						mm	mm	mm
QKF-0606-FNPR	06	10.0	3/8	6525	5075	NPTF	3/8-18	M28x2	34.8	27.0	69.3
QKF-0808-FNPR	08	13.0	1/2	6525	5075	NPTF	1/2-14	M35x3	40.8	32.0	74.5
QKF-1012-FNPR	10	16.0	5/8	6525	5075	NPTF	3/4-14	M38x3	43.8	34.0	81.3
QKF-1212-FNPR	12	19.0	3/4	6525	5075	NPTF	3/4-14	M43x3	51.0	42.0	93.0
QKF-1616-FNPR	16	25.0	1	6525	5075	NPTF	1-11 1/2	M52x4	59.8	50.0	101.0
QKF-1620-FNPR	16	25.0	1	6525	5075	NPTF	1 1/4-11 1/2	M52x4	59.8	50.0	101.0

NPTF connection according to ANSI B1-20.3.

Other threads available. Please consult factory.



SCREW COUPLING - FLAT FACE QK CONNECTABLE UNDER PRESSURE

Male coupling - Female thread

Item Code				Working Pressure Conn.	Working Pressure Disconn.	Thread 1	F1	D1	CH	CH1	L1
	Dash	mm	in					mm	mm	mm	mm
QKM-0606-FNPR	06	10.0	3/8	6525	5075	NPTF	3/8-18	33.8	33.0	27.0	97.1
QKM-0808-FNPR	08	13.0	1/2	6525	5075	NPTF	1/2-14	40.8	39.0	32.0	107.0
QKM-1012-FNPR	10	16.0	5/8	6525	5075	NPTF	3/4-14	43.8	34.0	42.0	117.8
QKM-1212-FNPR	12	19.0	3/4	6525	5075	NPTF	3/4-14	51.2	50.0	42.0	127.8
QKM-1616-FNPR	16	25.0	1	6525	5075	NPTF	1-11 1/2	59.8	60.0	50.0	137.0
QKM-1620-FNPR	16	25.0	1	6525	5075	NPTF	1 1/4-11 1/2	59.8	60.0	50.0	137.0

NPTF connection according to ANSI B1-20.3.

Other threads available. Please consult factory.

Because we continually examine ways to improve our products, we reserve the right to alter specifications or discontinue products without prior notice.



QX

SCREW TYPE POPPET STANDARD ISO 14540

TOP COAT



DN 6 to 10
1/4" to 3/8"



WP 700 bar
10150 PSI

- Typically employed in power tools
- Compatibility with other couplings in-use

General features: ARGUS QX high pressure couplings can be used for connecting and disconnecting hydraulic lines. Their robust construction and tested components make them ideally suited for high and intermittent pressure loads. During the coupling action, valves that release and/or block the flow are automatically activated. The QX quick release coupling, formed by coupling plug and coupling socket, is coupled by a screwing action with the hand nut of the plug component.

Materials: galvanized steel - HNBR O-rings (other materials optional) - Thermoplastic dust cap and dust plug. Top Coat Cr-III zinc plating with additional trivalent passivation for outstanding surface protection.

Application: suitable for liquid lines with mineral oil-based hydraulic fluids to DIN 51524 T1+T2.

Norm: ISO 14540

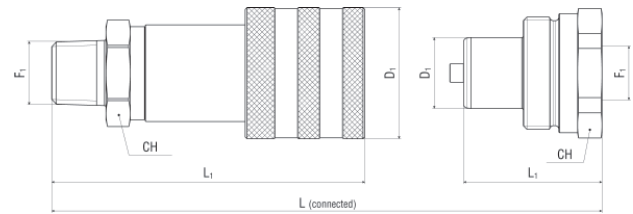
Temperature range:
-22°F (-30°C) to +257°F (+125°C)

Note: rated flow / pressure drop values on request.

Other sizes and connection types available on request.

Specific instructions for installation, use and maintenance are separately provided.

Because we continually examine ways to improve our products, we reserve the right to alter specifications or discontinue products without prior notice.



SCREW COUPLING - POPPET QX

Female coupling - Male thread

Item Code				Working Pressure	Burst Pressure	Thread 1	F1	D1	CH	L1	L
	Dash	mm	in	psi	psi			mm	mm	mm	mm
QXF-0404-MNPT	04	6.0	1/4	10150	40600	NPTF	1/4-18	28.5	22.0	59.6	74.00
QXF-0606-MNPT	06	10.0	3/8	10150	40600	NPTF	3/8-18	35.0	25.0	72.5	83.00

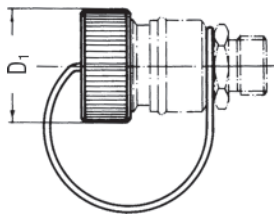
NPTF connection according to ANSI B1-20.3.

SCREW COUPLING - POPPET QX

Male coupling - Female thread

Item Code				Working Pressure	Burst Pressure	Thread 1	F1	D1	CH	L1	L
	Dash	mm	in	psi	psi			mm	mm	mm	mm
QXM-0404-FNPR	04	6.0	1/4	10150	40600	NPTF	1/4-18	15.8	19.0	32.5	74.00
QXM-0606-FNPR	06	10.0	3/8	10150	40600	NPTF	3/8-18	19.0	32.0	35.0	83.00

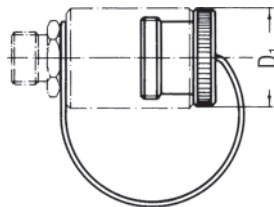
NPTF connection according to ANSI B1-20.3.



SCREW COUPLING - POPPET QX

Dust cap for female coupling

Item Code	Color	Material				D1
			Dash	mm	in	mm
QXC-04	BLK	PE	04	6.0	1/4	23.0
QXC-06	BLK	PE	06	10.0	3/8	27.0



SCREW COUPLING - POPPET QX

Dust plug for male coupling

Item Code	Color	Material				D1
			Dash	mm	in	mm
QXP-04	BLK	PE	04	6.0	1/4	25.0
QXP-06	BLK	PE	06	10.0	3/8	30.0

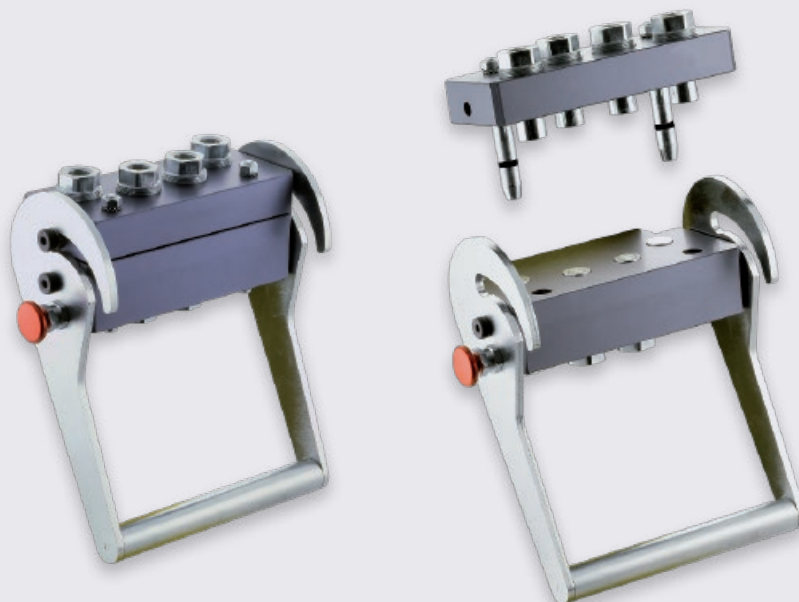
Because we continually examine ways to improve our products, we reserve the right to alter specifications or discontinue products without prior notice.



QM

MULTI-COUPLING

TOP COAT



PATENT PENDING



DN 10 to 19
3/8" to 3/4"



WP 250 bar
3625 PSI

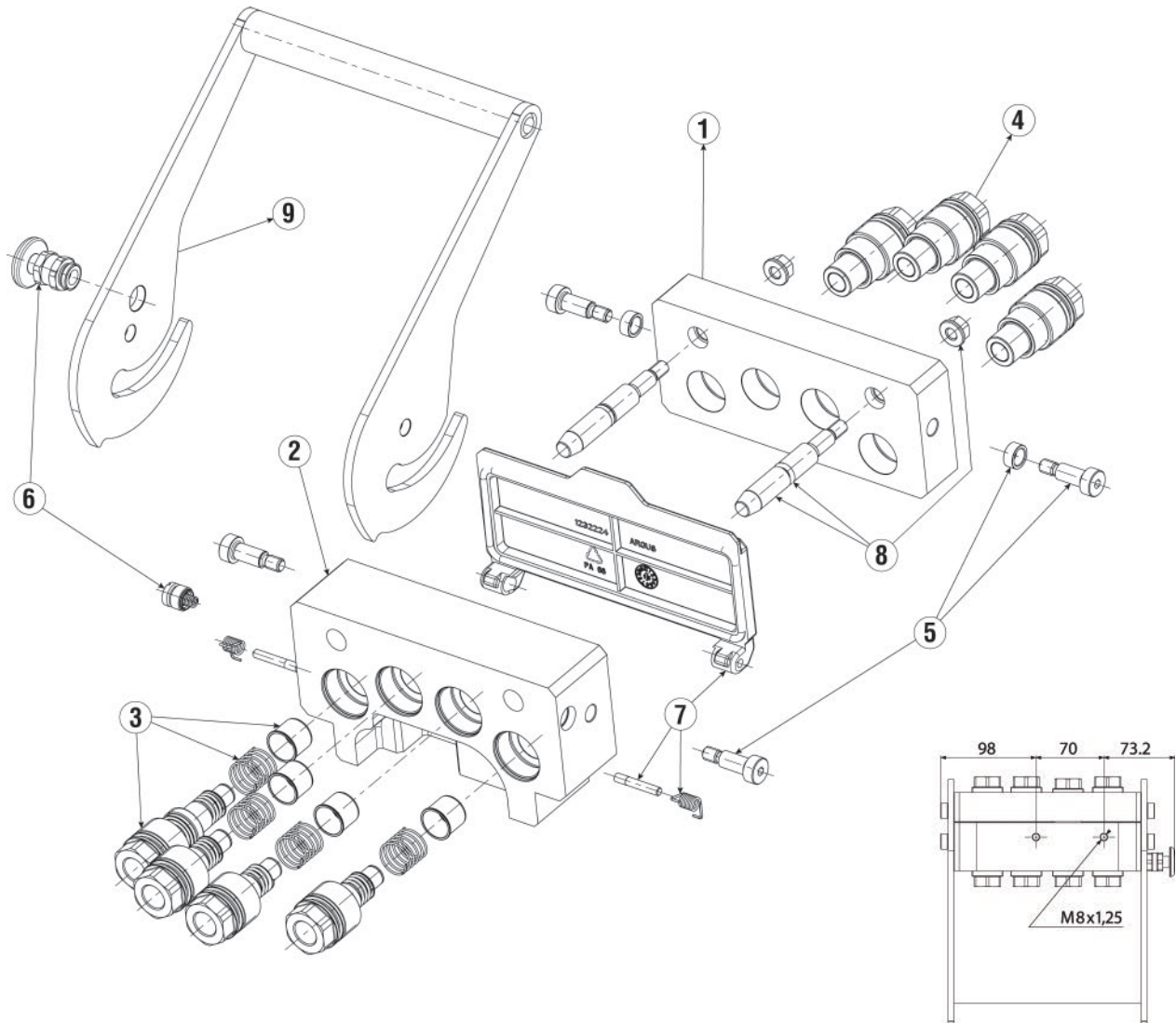
- Tailor-made according to customer's needs
- Compact, reliable and safe

General features: ARGUS multi-couplings, which consist of a fixed and a mobile part, are developed following the specific needs of the user. The multi-connection plates are obtained from an anodized aluminium block as standard, and include the locations for flat-face couplings built of carbon steel with TOP COAT surface protection, but every component can be manufactured in different materials on request. The number of lines and possible electric or pneumatic connections can be defined depending on the application requirements. Connecting and disconnecting are carried out by means of a cam leverage group with guiding

pins, and a safety device is always present. Hose connections can be executed with threads of every type (e.g. BSP, NPT, SAE, metric) or also with the quick connect system "Plug-In Connector".

Note: a complete range of spare parts and accessories are available specific instructions for installation, use and maintenance are separately provided.

Because we continually examine ways to improve our products, we reserve the right to alter specifications or discontinue products without prior notice.



Pos.	Description	Multi-k 4x3/8"	Multi-k 4x1/2"
		Part Number	Part Number
1	Mobile plate	1232208	1236572
2	Fixed plate	1232209	1233705
3	Female coupling	1232275	1233168
4	Male coupling	1232278	1236574
5	Screw group	1232282	1232282
6	Safetely lock group	1232280	1232280
7	Cover group	1232276	1232276
8	Guide pin group	1232281	1232281
9	Lever group	1233171	1233171

COMPONENTS AND MATERIALS

- Mobile and fixed plate in anodized aluminium 6082
- Quick release coupling in steel with galvanic protection
- Seal and back-up ring in NBR and PTFE
- Springs according to EN 102070-1
- Lock lever in steel with galvanic protection
- Safetely block in steel and aluminium

Because we continually examine ways to improve our products, we reserve the right to alter specifications or discontinue products without prior notice.

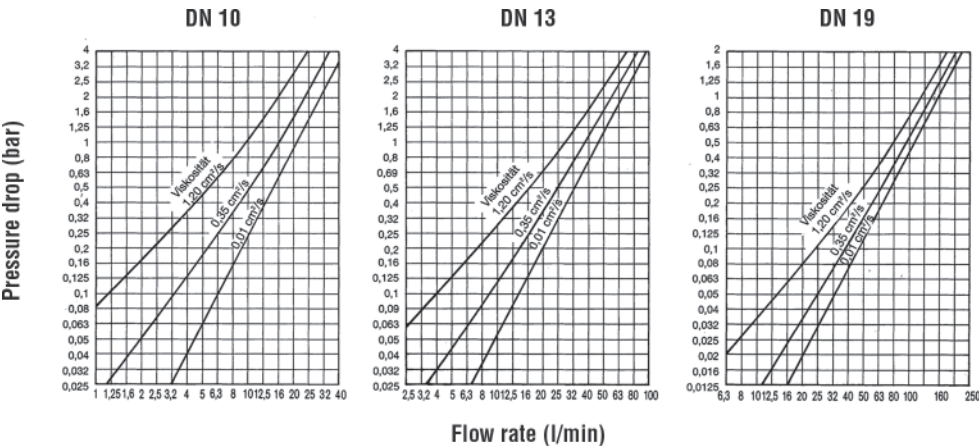


FLOW RATE TABLE

QA Series ISO-A POPPET STANDARD ISO 7241 A

 DN 6 TO 40

 TO MAX. WP 140 BAR



Because we continually examine ways to improve our products, we reserve the right to alter specifications or discontinue products without prior notice.



QF Series

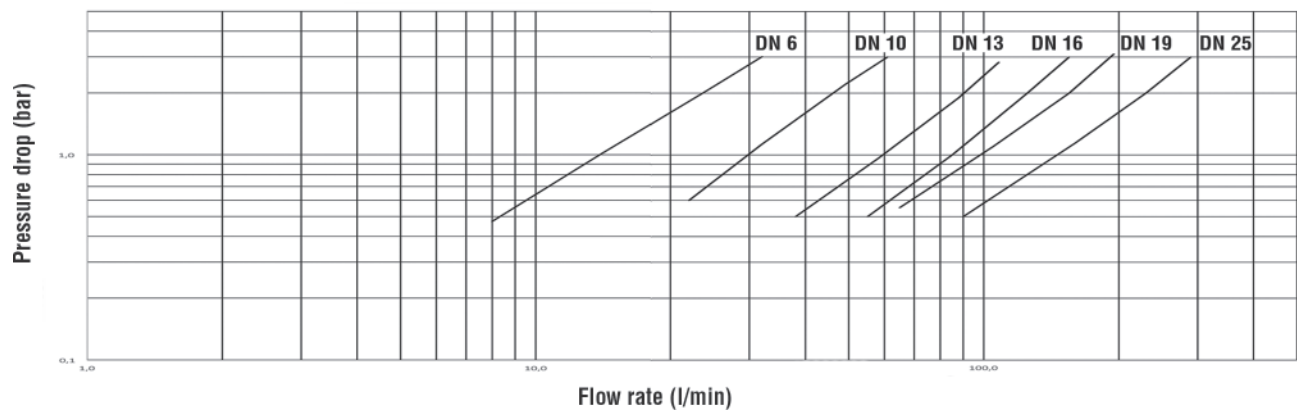
FLAT FACE STANDARD ISO 16028



DN 6 TO 25



TO MAX. WP 350 BAR



QS Series

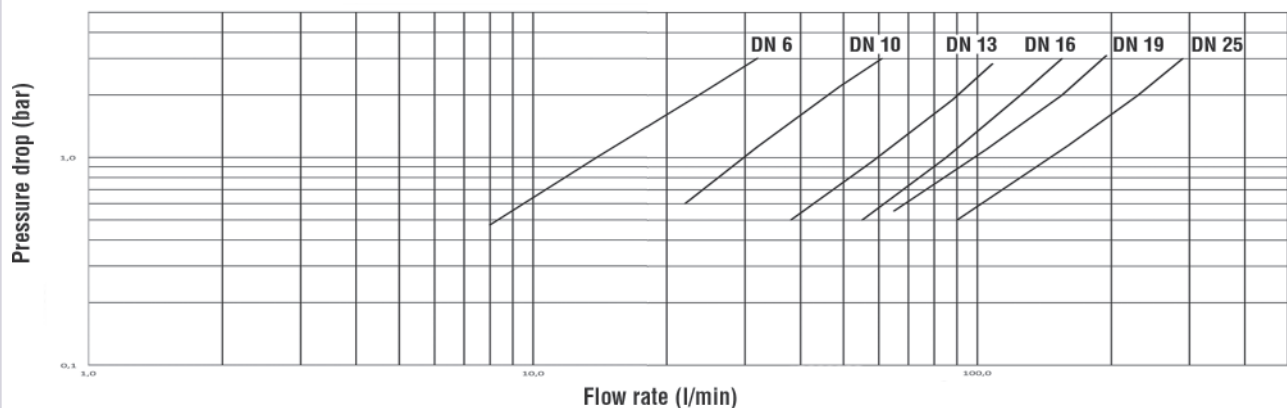
SCREW TYPE FLAT FACE



DN 10 TO 25



TO MAX. WP 150 BAR



Because we continually examine ways to improve our products, we reserve the right to alter specifications or discontinue products without prior notice.



Cautionary Statement

All Products sold and distributed by Kuriyama of America, Inc. are in the nature of commodities and they are sold by published specifications and not for particular purposes, uses or applications. Purchaser shall first determine their suitability for the intended purposes, uses or applications and shall either conduct its own engineering studies or tests, or retain qualified engineers, consultants or testing laboratories and consult with them before determining the proper use, suitability or propriety of the merchandise or Products for the intended purposes, uses or applications.

Kuriyama of America, Inc. ("Seller") does not recommend the Products for any particular purpose, use or application, and the Purchaser or user thereof shall assume full responsibility for the suitability, propriety, use and application of the Products. Purchaser shall follow all instructions contained in Seller's catalogs, brochures, technical bulletins and other documents regarding the Products. The Products, including but not limited to, hose, tubing or couplings, may fail due to the use or conveyance of substances at elevated or lowered temperatures or at excessive pressure, the conveyance of abrasive, injurious, flammable, explosive or damaging substances.

Hose or tubing used in bent configurations will be subjected to increased abrasion. Hose clamps or couplings may loosen after initial installation and all sections of hose and tubing including connections, couplings, clamps, conductivity and bonding should be inspected frequently, regularly and consistently, and should be replaced, adjusted or re-tightened for the avoidance of leakage, for the prevention of injuries or damages, and for general safety purposes. Except as indicated in its Limited Warranty, Seller shall not be liable or responsible for direct or indirect injuries or damages caused by or attributed to the failure or malfunction of any Products sold or distributed by it.

Purchasers or users of the Products should frequently and consistently undertake inspections and protective measures with respect to the use and application of Products, which should include the examination of tube and cover, conditions of the hose or tubing, and the identification, repair or replacement of sections showing cracking, blistering, separations, internal and external abrasions, leaking or slipped couplings or connections and make proper proof tests.

Limited Warranty

The Products sold or distributed by Seller are warranted to its customers to be free from defects in material and workmanship at the time of shipment by us, subject to the following provisions. ALL WARRANTY CLAIMS SHALL BE MADE WITHIN SIX (6) MONTHS AFTER SELLER SHIPPED THE PRODUCTS. SELLER'S LIABILITY HEREUNDER IS LIMITED AT SELLER'S EXCLUSIVE DISCRETION, TO 1) THE PURCHASE PRICE OF ANY PRODUCTS PROVING DEFECTIVE; 2) REPAIR OF ANY DEFECTIVE PRODUCT OR PART THEREOF; OR 3) REPLACEMENT OF ANY DEFECTIVE PRODUCT OR PART UPON ITS AUTHORIZED RETURN TO SELLER.

THIS WARRANTY IS IN LIEU OF AND EXCLUDES ALL OTHER WARRANTIES, EXPRESSED, IMPLIED, STATUTORY, OR OTHERWISE CREATED UNDER APPLICABLE LAW INCLUDING, BUT NOT LIMITED TO, THE WARRANTY OF MERCHANTABILITY AND THE WARRANTY OF FITNESS FOR A PARTICULAR PURPOSE. IN NO EVENT SHALL SELLER OR THE MANUFACTURER OF THE PRODUCT BE LIABLE FOR SPECIAL, INCIDENTAL, OR CONSEQUENTIAL DAMAGES, INCLUDING LOSS OF PROFITS, WHETHER OR NOT CAUSED BY OR RESULTING FROM THE NEGLIGENCE OF SELLER AND/OR THE MANUFACTURER OF THE PRODUCT, UNLESS SPECIFICALLY PROVIDED HEREIN. IN ADDITION, THIS WARRANTY SHALL NOT APPLY TO ANY PRODUCTS OR PORTIONS THEREOF WHICH HAVE BEEN SUBJECTED TO ABUSE, MISUSE, IMPROPER INSTALLATION, MAINTENANCE, OR OPERATION, ELECTRICAL FAILURE OR ABNORMAL CONDITIONS, AND TO PRODUCTS WHICH HAVE BEEN TAMPERED WITH, ALTERED, MODIFIED, REPAIRED, REWORKED BY ANYONE NOT APPROVED BY SELLER, OR USED IN ANY MANNER INCONSISTENT WITH THE PROVISIONS OF THE "CAUTIONARY STATEMENT" ABOVE OR ANY INSTRUCTIONS OR SPECIFICATIONS PROVIDED WITH OR FOR THE PRODUCT.

09/17/18 REV

Distributed by:



Kuriyama of America, Inc.

Headquarters, Sales Office and Warehouse Location

360 E. State Parkway, Schaumburg, IL 60173-5335

Phone: (847) 755-0360 • Toll-free FAX: (800) 800-0320

International FAX: (847) 885-0996

Web Site: www.kuriyama.com

E-Mail: sales@kuriyama.com



CTPAT
YOUR SUPPLY CHAIN'S STRONGEST LINK

CONTACT OUR SALES/WAREHOUSE LOCATIONS BELOW WHICH SERVE YOUR AREA

SOUTHWEST WAREHOUSE KURIYAMA OF AMERICA, INC. HOUSTON

200 PORTWALL STREET, SUITE 100

HOUSTON, TX 77029

Phone: (713) 674-8212

Toll Free Phone: (800) 501-6808

FAX: (713) 674-5214

Toll Free FAX: (800) 800-5214

WESTERN WAREHOUSE KURIYAMA OF AMERICA, INC. SANTA FE SPRINGS

10749 SHOEMAKER AVENUE

SANTA FE SPRINGS, CA 90670-4039

Phone: (562) 941-4507

FAX: (562) 941-8940

Toll-Free FAX: (800) 326-8940

SOUTHEAST WAREHOUSE FORTNEY SALES CO., INC. 4221 CANTRELL ROAD NW

ACWORTH, GA 30101

Phone: (770) 427-6528

FAX: (770) 423-9249

Toll Free FAX: (800) 423-9249

Web Site: www.fortneysales.com

E-Mail: sales@fortneysales.com

EASTERN WAREHOUSE EASTERN RUBBER & PLASTICS CO., INC. 100 GOLDMAN DR.

PLUMSTED INDUSTRIAL PARK

CREAM RIDGE, NJ 08514

Phone: (609) 758-0100

FAX: (609) 758-0102

Toll Free FAX: (800) 445-7138

Web Site: www.easternrubber.com

E-Mail: sales@easternrubber.com

IN MEXICO:

KURIYAMA DE MÉXICO S DE RL DE CV

AV JOSE PALOMO MARTINEZ NO 520-20

BODEGA 5

PARQUE INDUSTRIAL OMOLAP

APODACA, N.L. CP:66633, MÉXICO

Telefonos: (81) 1086-1870 O 71

Lada sin Costo 01 800 822 52 00

FAX: (81) 1086-1869

Internet: www.kuriyama.com

Correo Electronico: ventas@kuriyama.com



Visit us

www.kuriyama.com

on the Web!